

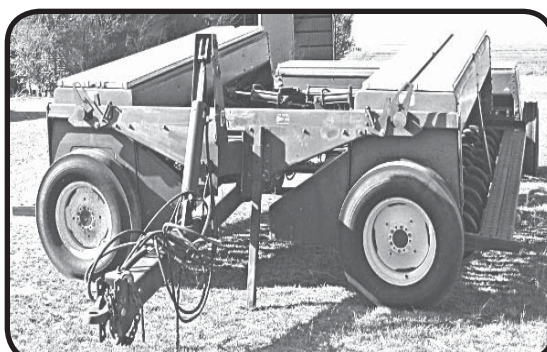
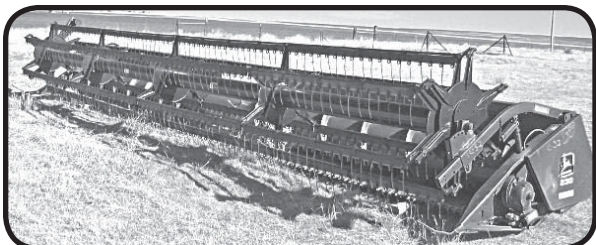
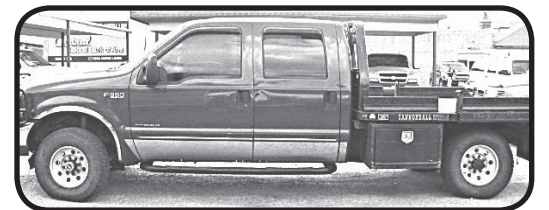
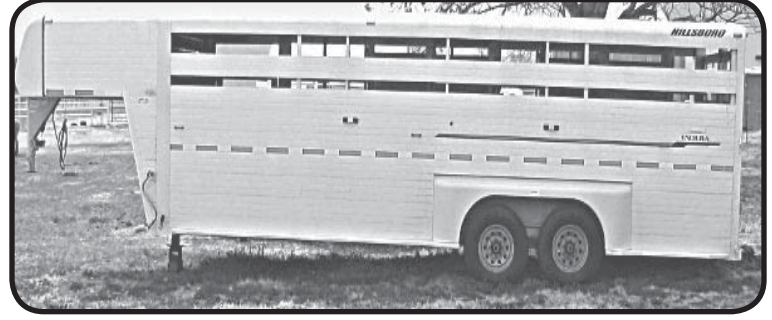
MACHINERY AUCTION

**TRACTORS ~ COMBINES ~ TRUCKS ~ TRAILERS ~ WELDING
TILLAGE EQUIPMENT ~ CATTLE EQUIPMENT ~ LAWN/GARDEN**

SATURDAY, MAY 14, 2011 ~ 9:30 A.M.

SALE LOCATION: From the Jct., of Hwy 64 and Hwy 281 South, go 1¼ miles South - East side of the Hwy., Alva, Oklahoma. The auction is across from the Alva Airport. There will be transportation available if needed. You may call Kevin at 580.430.1985.

AUCTIONEER'S NOTE: KT's Auction and Real Estate, LLC., is pleased once again to offer to the public this line of farm equipment at our spring consignment sale. Thanks again to our area farmers and ranchers for their continued support.



TRACTORS - COMBINES

- John Deere 8760 4WD Tractor, Serial #2659, approx., 8,014., hrs., 20.8-38 steel duals, triple hyd., 24 speed.
- John Deere 8630 4WD Tractor, Serial #8899, approx., 10,150 hrs., 20.8-38 steel duals, triple hyd., 3 pt, PTO. (50 Series engine replacement at 6,967 hrs.)
- 2000 New Holland 8970 MFWD Tractor, Serial #D421014, 520/85R42 rear rubber, 16.9-30 fronts, full rack front weights, 4 hyd., approx., 6002 hrs.
- John Deere 7610 Tractor, Serial #10645, power quad trans, 18.4R-38 single rear rubber, 11.00-16 fronts, triple hyd., 3 pt., power take-off, approx., 6,323 hrs. Koyker Model 510 FE loader, 7' bucket. Loader & tractor offered separately then collectively.
- 1977 John Deere 4430 Tractor, approx., 7,300 hrs., quad range trans, 3 pt., PTO, 18.4-38 tires. Sells/JD 158 FE loader/joystick.
- John Deere 4630 Tractor, Serial #10952, approx., 11,800 hrs., dual hyd., power shift trans., 18.4-38 factory cast duals, front weights, rock shaft. (1 owner)
- John Deere 4630 Tractor, standard, Serial #28951, approx., 11,100 hrs., 20.8-38 cast duals, 11.00-16 fronts, front end weights, quad range trans., PTO.
- 1952 Massey Harris 44 Tractor/loader.
- John Deere 7720 Titan II Combine, Serial #610807, approx., 2,865 actual hrs., straw chopper, hydrostat drive, 24.5-32 drive tires. Sells/JD 224 platform, 24'.
- John Deere 7720 Combine, Serial #556808, approx., 1,721 actual hrs., straw chopper, hydrostat drive, 24.5-32 drive tires. Sells/JD224 platform, 24'. Platforms will sell/single axle header trailer.
- 230 rigid platform/pt reel. Serial #600135
- John Deere 212 pt platform, plastic fingers.

TRUCKS - PICKUPS - YUKON XL

- 1991 Freightliner, Model FLD, 60 Series Detroit, 11.R liter, 350 hp., 295/5R225 rubber, air ride susp., air slide 5th wheel, 60" sleeper, 9 sp., Eaton trans.
- 1974 Chevy C60 Tandem Truck, 366 engine, 5-sp, 2-sp, 900-20 tires, 22' steel bed, 40" sides/12" extensions.
- 1964 IHC 1600 Loadstar, 20' grain bed/hoist, 4-sp., 2-sp axle, 8.25-20 front, 900-20 rear, 32" grain sides.
- 74' Chevy Grain Truck, rigged for hyd., drill fill, 10.00-20 tires.
- 68' Chevy Grain Truck, rigged for hydr., drill fill, 10.00-20 tires.
- 2005 Chevy 2500 HD ext., cab, approx., 156,700 miles, 4x4, cruise, auto trans., 6.6 Duramax cab & chassis.
- 2000 Ford F-350 XLT, Super Duty SRW, crew cab, 4x4, 7.3 power stroke diesel, Cannonball bale bed, pw/pl, approx., 163,400 miles, grill guard, 9900 GVW.
- 1993 Ford F-250 XLT, 4x4, Butler spike bed, 235/85R16, 5.8 ltr, gas, auto, approx., 250,500 miles, pw/pl, cruise, 8,600 GVW.
- 1993 Ford F-350, 5-sp trans., 4x4, diesel, sells/Deweze bale bed.
- 1991 Ford F-250, 2WD, gas engine, 5-sp trans.
- 2003 GMC Yukon XL, SLT, approx., 100,600 miles, 4x4, 5.3 V-8, chrome grill guard, running boards, memory heated front seats, power pedals.

TRAILERS (STOCK-IMPLEMENT-HAY)

- Transcraft Trailer, 48' x 96" wide, 15 strap winches, aluminum decking, spread axle, toolboxes, 285/75R24.5 rubber, air ride suspension.
- 48' x 96" wide flat trailer/5½' extendable extension, 11R24.5 rubber, air ride suspension, ratchet strap winches, spread axle.
- 2008 Travalong aluminum 28' x 6' 8" stock trailer, set back nose, 3 compartment, side rail in front of axles, front vents, 16,470 GVW.
- 2004 Hillsboro Endura 24' x 7' aluminum stock trailer, 14,310 GVW, 3 compartment.
- Circle H gooseneck stock trailer, 20' x 6', full top, rubber floor, front vents.
- WW 24' x 6' frame top gooseneck stock trailer, 3 compartments, 16" tires, date of man. 4/85.
- WW 16' x 6' open top stock trailer, center gate, bumper pull, date of man. 3/85.
- 16' x 6' stock trailer, bumper pull, full top.
- Hillsboro gooseneck trailer/18' grain bed, elec/hyd., hoist, steel floor, 10,000 # axles, 23,500 GVW, tandem duals, 40" sides, Poorman rollover tarp, date of man., 11/80.
- Elite Flatbed Trailer, 22'/5' beaver tail, loading ramps, 7000# axles.
- Jantz triple axle combine trailer made into flatbed/gooseneck hitch.
- Swather trailer, bumper pull, adj., runners, new 7.50-16 tires.
- Koenig utility box, 11' long, mounted on truck frame, gooseneck hook-up/adjustable coupler, dual wheels.
- Two all steel flatbeds, 7½' x 9', gooseneck hitches.

TILLAGE EQUIPMENT

- Krause 4950 Series, 26' double offset disk, Model 4956, 22" (m or l) front blades, 23" (m or l) rear blades.
- Big G 31' double offset disk.
- Krause 1950 Series, double offset disk, 32', new lift cyd., 21" front, 20" rear
- Miller 32' double fold offset disk.
- John Deere 331 Series double offset disk, 31'.
- John Deere 360 swinger disk, 27½'.
- Crustbuster 16' single wing fold offset disk, 9" spacing, 20" (m or l) blades front, 21" (m or l) on rear.
- Wilbeck 18' single fold offset disk.
- Miller 16' offset disk, 23½" (m or l) front blades, 23½" (m or l) rear blades.
- Big G 16' offset disk.
- Sunflower chisel, 19 shank double fold/3 row tine harrow attach.
- 12' Chisel.
- Groheme Hamie 9 shank chisel.
- Two sets of 3600 moldboard plows, /trashboards, 5-bottom/tandem hitch.
- John Deere 3100 6-bottom moldboard plow/Durabilt plow shredders, on land hitch, trashboards.
- John Deere 3100-5-bottom moldboard plow/Durabilt plow shredders, trashboards.
- Krause cultivator Model 4133, walking tandems/Krause 3-row tine harrow, 36'.
- John Deere 48' noble springtooth.
- John Deere 60' noble.
- Baker 8100 Series springtooth/2row drag harrow, 28'.
- 28' Crustbuster springtooth.
- Pepin 60' harrow.
- Lilliston 6-row cultivator.

SEEDING - FERTILIZER EQUIPMENT - GRAIN HANDLING

- John Deere 8550 folding 36' fertilizer drill, 8" spacing, 3-section.
- Great Plains folding drill, Model 510781-DDR3, Serial #2329, 51 openers, 7" spacing, 30'.
- Two - John Deere 8300 double run grain drills, 20 x 8, gang press, single disc openers/late style boot, sells/Baker hydr., folding drill hitch.
- Western pull type dry fertilizer spreader, 1000 RPM, PTO, soft spread, 6 ton.
- Parker gravity flow grain box, 2 compartment, mounted on truck frame, steerable front axle/single 10.00-20 front rubber and 10.00-20 duals on rear, approx., 700 bu.
- Grain auger, 30' x 6" 6½ hp., Honda gas engine.
- 16' grain auger.
- Drill fill auger.

HAY EQUIPMENT - ROUND BALE TRAILERS

- John Deere 567 large round baler, Serial #197024, surface wrap, mega wide pu, 1000 RPM/PTO.
- Hesston 4600 wire tie small square baler, Serial #3411, 540 RPM/PTO.
- Vermeer Model R-23 hydr., driven twin rake, Serial #1003112.
- Haybuster 256 plus II bale processor, Serial #941971, self loading, 1000 RPM/PTO, will handle 2 round bales.
- Hesston 1170 hydra-swing mower conditioner, 540 PTO, double sickle, rubber on steel crimper, Serial #170H00190.
- New Holland Model 116 mower conditioner, Serial #555610, 14' cut, 540 PTO, rubber on rubber crimper.
- New Holland 495 Haybine, 540 shaft, 12' cut, rubber crimpers, Serial #462285.
- New Holland Model 490 Haybine, 540 shaft, 12' cut, rubber crimpers, new wobble box recently installed, Serial #386930.
- New Holland 469 Haybine, 9', Serial #198570.
- Orange Ox inline round bale trailer, will haul eight 5' round bales, tandem axle, electric brakes, gooseneck hitch.
- CarDon 5-bale trailer, gooseneck hitch, tandem axle.
- CarDon 3-bale trailer, bumper pull.
- Shop built single round bale carrier/cable winch.
- Two 3 pt., round bale spikes.
- * Several hay tarps & straps.
- Graves 20' hay elevator.
- Pop-up bale elevator.

CATTLE EQUIPMENT - FENCING

- WW cattle working chute/Pearson self-catching headgate.
- WW cattle working chute.
- Several round bale feeders.
- Two mineral feeders.
- 12' cattle guard.
- Several feed bunks.
- Several t-posts.
- Approx., 50 electric fence posts.
- 10 welded wire panels.
- Several rolls smooth wire.
- Several rolls barb wire.
- Several 110 fence chargers.

MISCELLANEOUS EQUIPMENT

- John Deere 709 rotary cutter.
- Case 3 pt., backhoe.
- 10' land leveler.
- Speed King land leveler, 8'.
- Three 3 pt post hole diggers.
- 3 pt., long arm boom.
- Home-made soil packer.
- 300 gal., sprayer, gas motor.
- WELDERS - WELDING SUPPLIES
(Many of the welding supplies are new or like new. Consigned by Bruce Stansberry)
- Miller legend welder & generator.
- Lincoln 250 amp., shop welder.
- Two - H & M beveling machines.
- Several Airgas oxygen & acetylene bottles.
- Two sets of gauges.
- Wire wheels, grinding wheels, gloves, welding wire, various sizes of welding rods, hoses, tips.
- Makita cutoff saw.

LAWN & GARDEN - ATV - UTILITY TRAILER

- 2007 Swisher 60", 14½ hp., pull behind or beside, finish cut mower. Used approx., 20 hrs.
- John Deere L100 lawn tractor/42" cut, 17 hp., Briggs, 5-sp trans., foam filled tires.
- Murray lawn tractor, 52" cut, 20 hp., twin cyl., Briggs engine, 5- sp., trans.
- Troy Bilt roto tiller.
- 2003 Honda Rancher ES 350, 4x2, approx., 5,180 miles.
- 5x10 utility trailer, 3500# axle, 10" sides, fold down tailgate, all steel floor. (Like new)

TRAVEL TRAILER

- 2002 Hitchhiker II Four Season 5th wheel, 28', 3 slides, gooseneck hook-up.

SHOP TOOLS - TOOL BOXES - PICKUP TOPPER

- Several hand tools, end wrenches, sockets, come-a-longs, etc.
- Side mount pickup tool boxes.
- Assorted tool boxes.
- Century 8' fiberglass topper, black, believed to fit late model Chevy.

MISCELLANEOUS

- 500 gal., fuel tank on stand. ~ 100 gal., fuel tank ~ fuel tank & hand pump.
- Pickup headache rack.
- Small gas engine.
- Chisels, sweeps & points.
- 45 gal., propane tractor tank ~ 4 - propane tank heaters.
- Pickup slide-in stock rack.
- Drafthorse harness ~ Horse drawn hitch cart/flatbed wagon

~ Other items too numerous to mention ~

SELLERS ~ Area Farmers

Auction Conducted By:



227 Oklahoma Boulevard
Alva, Oklahoma
580.327.5151

Concessions Available
by Teen Impact

Auction Staff:

Kevin Thiesing - Broker/Auctioneer
Kenny Rockenbach - Broker Assoc./Auctioneer
Bob Rockenbach, Broker Assoc./Auctioneer
Randy Lancaster, Sales Associate/Ringman
Jack Staats, Auctioneer/Ringman
Tim Ohm - Auctioneer/Ringman
Jana Thiesing, Kassy Yauk, Staci McPhail - Cashiers
Kaylee Ohm - Sales Associate/Cashier
Jeanie Lancaster - Clerk

Check our website for more photos.

AUCTION TERMS & CONDITIONS: Cash or other arrangements with auction staff made prior to bidding. Any buyers unknown to KT's Auction and Real Estate, LLC., must furnish bank references. Items will be auctioned in order of sale as determined solely by the auctioneer. All items are sold "as is, where is". KT's Auction and Real Estate, LLC., have not made inspection of the items and make no warranties, expressed or implied. The item or items presented at the auction have been provided by the owner and KT's Auction and Real Estate, LLC., assumes no responsibility for the accuracy of the same. All announcements made by the auctioneer the day of sale take precedence over any previously printed material or any other oral statements made. Not responsible for accidents.