

# ~ Mineral Auction ~

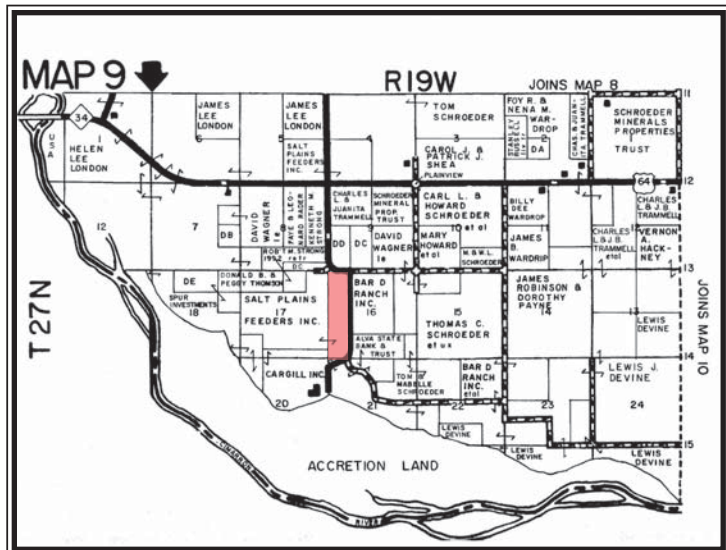
Thursday, December 15, 2011 ~ 10:00 a.m.

**Sale Location:** Women's Building at the Woods County Fairgrounds, SW edge of Alva, Oklahoma.

## Undivided Mineral Interest In:

1. Section 16, T27N, R19W, W/2 NW/4, NW/4 SW/4 (Woods County) 60 Acres.
2. Section 29, T28N, R15W, N/2 NE/4 (Woods County) .5468750 Acres.
3. Section 20, T28N, R15W, S/2 SE/4 (Woods County) .5468750 Acres.

**\*The map pictured designates the location of minerals in # 1.**



**Terms:** 10% down upon signing of contract to be held in escrow at Woods County Abstract, Alva, Oklahoma. Balance due upon closing. Conveyance of minerals will be by mineral deed without warranty, as is, where is.

**Possession:** Buyer will be transferred possession of minerals upon closing.

**Note:** Buyers of mineral acres should use due diligence to verify ownership and will have 20 days to do so prior to closing.

Abstracts of minerals will **NOT** be provided. **Conveyance will be by mineral deed without warranty**, as is, where is.

**Auctioneers Note:** All statements and information are believed to be reliable and correct, however, KT's Auction and Real Estate, LLC., makes no warranties, expressed or implied. Announcements made the day of auction will take precedence over any previously printed material or any oral statement made.

**SELLER:** Estate of Jene C. Swain, Terry L. Ross, Executor of the Estate  
Attorney for the Estate ~ Edward Sutter. Alva, Oklahoma

**Auction Conducted By:**

Visit Our Website At:  
[www.ktsauction.com](http://www.ktsauction.com)



**Auction Staff:**  
Randy Lancaster, Sales Associate/Auctioneer  
Kaylee Ohm, Sales Associate

227 Oklahoma Boulevard  
Alva, Oklahoma  
**580.327.5151**

**All Sales Subject to  
Confirmation of the Court.**

**Auction Staff:**  
Kevin Thiesing - Broker/Auctioneer  
Kenny Rockenbach - Broker Assoc./Auctioneer  
Bob Rockenbach, Broker Assoc./Auctioneer